

Here is an illustrated example of how to make a mach shortcut on the desktop that will open a specific profile when the shortcut is clicked.

**1) we have to make s shortcut on the desktop**

Making a shortcut is a basic windows skill. Typing “win make desktop shortcut” into Google will give lots of references about how to do this.

For example this link:

<http://www.homeandlearn.co.uk/BC//bcs1p3.html>

Will show you this illustrated set of steps to make the shortcut:

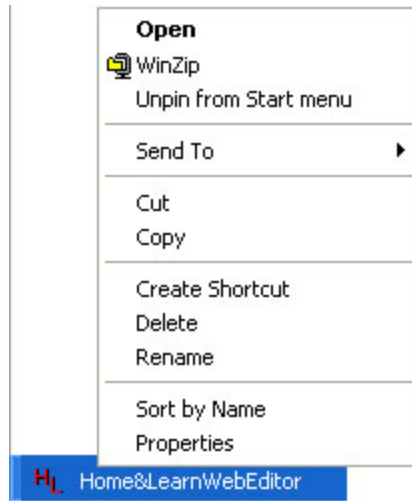
## How to create a Desktop Shortcut in Windows XP

To create a shortcut to a programme, and display the shortcut on the Desktop, do the following:

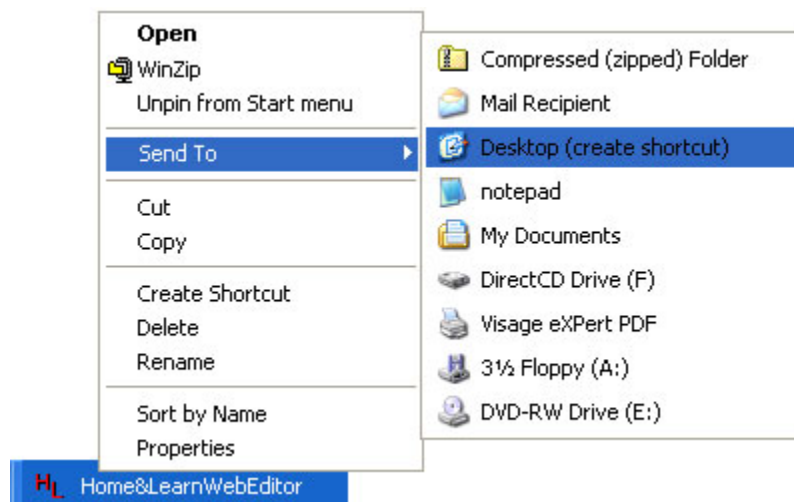
- Click the **Start** button on your desktop
- From the Start menu, locate the "**All Programms**" item
- Move your mouse to the programme you want to create a shortcut to. In the image below, we've gone for the Home and Learn Web Editor



- **Right click** on the menu item to see a new menu appear:



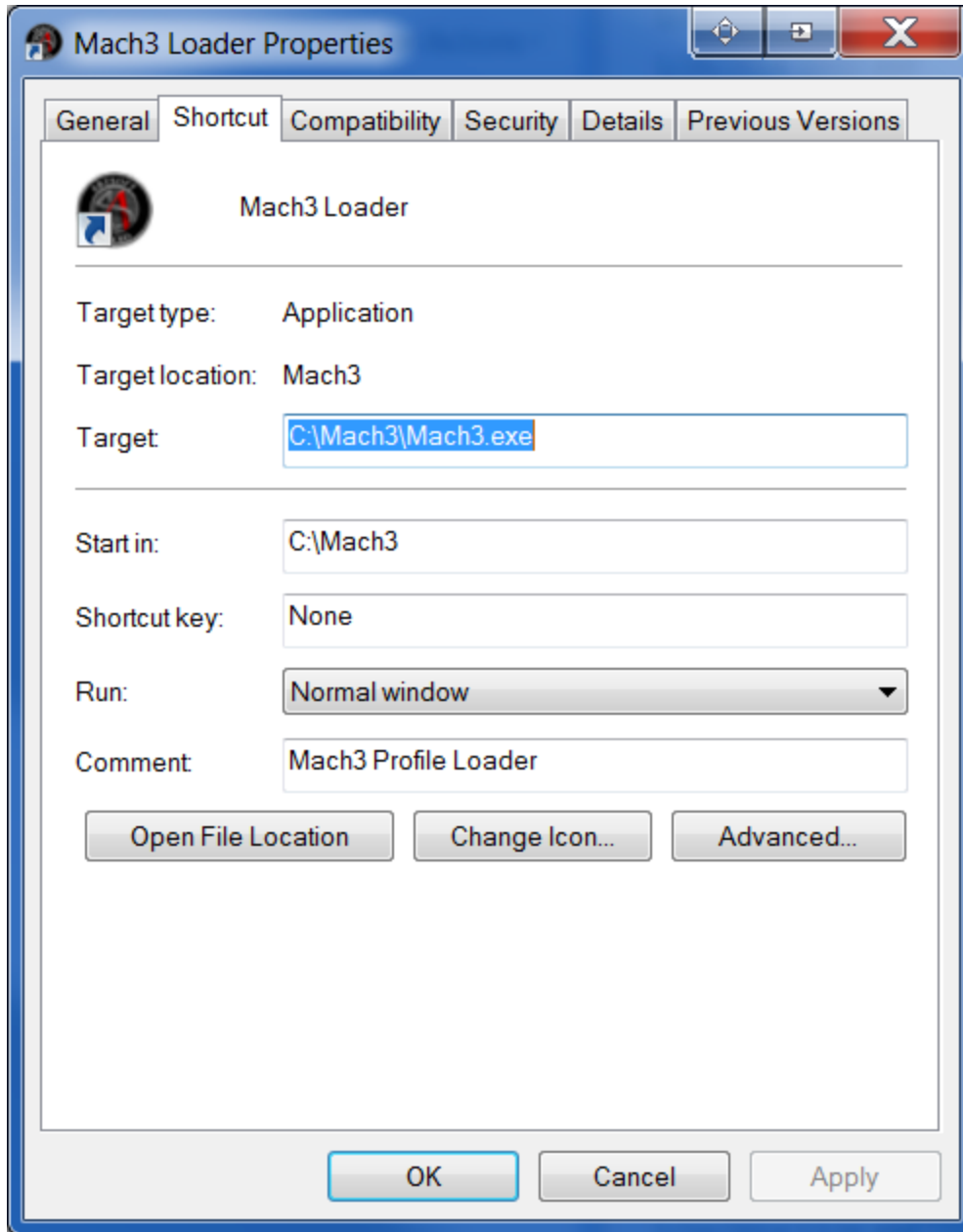
- On this menu, locate the "Send to" item
- On the Send to item, Left click on "Desktop (create shortcut)":



- When you left click Desktop (create shortcut), a new shortcut appears on your main screen - the Desktop.
- Double click your new shortcut to test it out. You should see a new window opening, and the program will start

Do the above steps using the start -> programs -> mach3 and use the mach3 loader menu item.

**2) Now we need to customize the mach short cut to open the profile you want.** Now you have a shortcut on the desktop that starts mach3. Right click the desktop short cut and select properties:

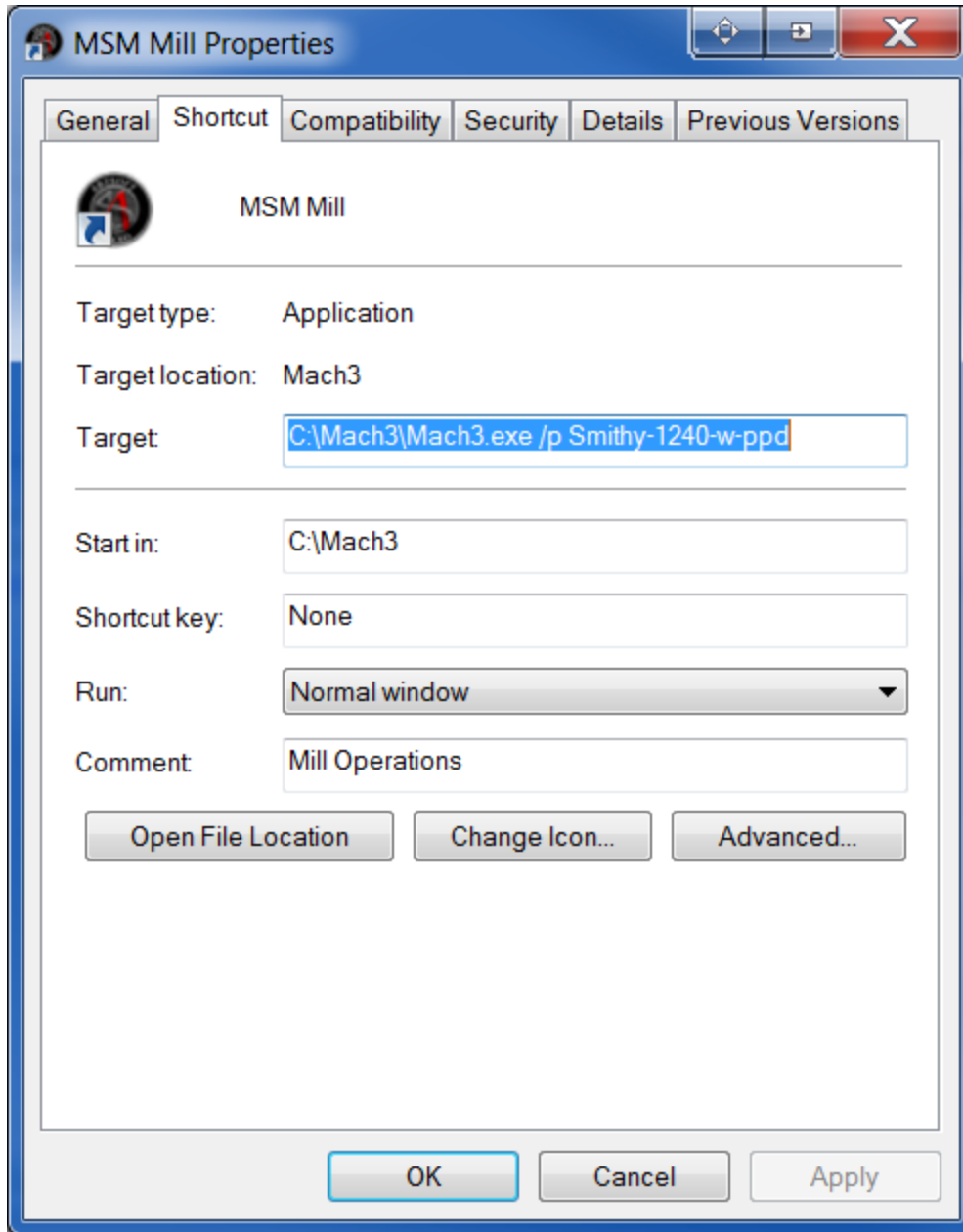


We want to change some properties of the shortcut.

The above shortcut opens mach in “mach loader” mode- since it does not tell mach what profile to use, mach starts up and shows the “pick a profile dialog” to you.

We need to change: a) the target line, b) the comment line and c) shortcut title.

Here is an example of a shortcut on my desktop that starts mach and tells mach to load the profile I use for my mill:

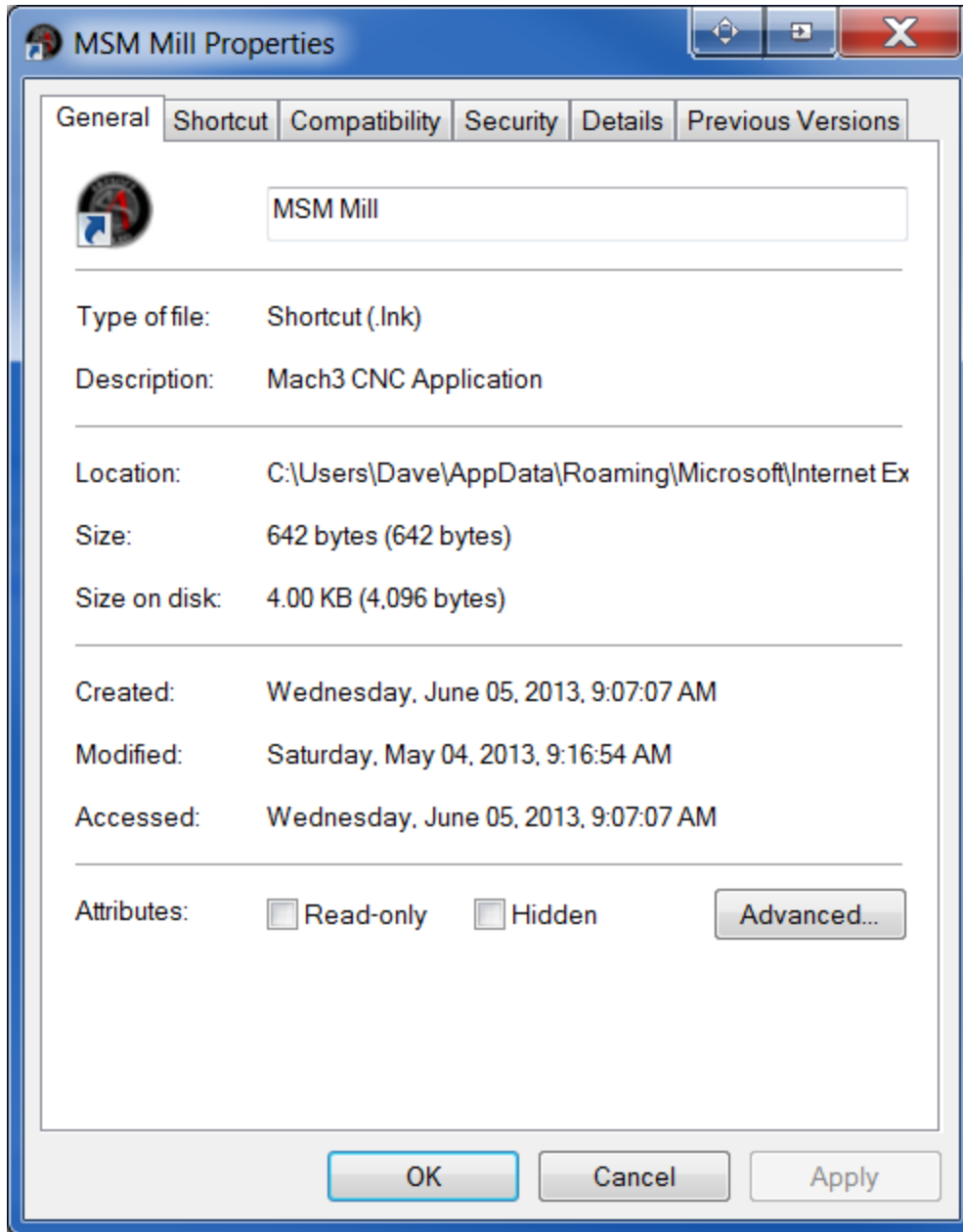


a) Make your Target line in the dialog like I show above, only instead of “Smithy-1240-w-ppd” use the name of the profile you want.

Note: Do not name profiles with spaces in the filename! Mach does not like that and you will avoid problems if you do not have space in profile file names.

b) Change the comment line to be some description of the shortcut that makes sense to you.

Now change to the general tab and change the top line of the dialog:



c) The top line is title text shown under the shortcut icon on the desktop – make it says something that you like. For example: Mach MyMillProfile

Click OK etc to save the changes you have made to the shortcut properties.

The new desktop shortcut will now start mach and load the profile instead of giving you the “pick a profile” dialog.